

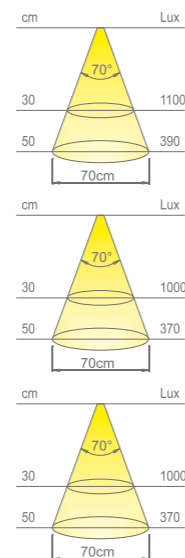
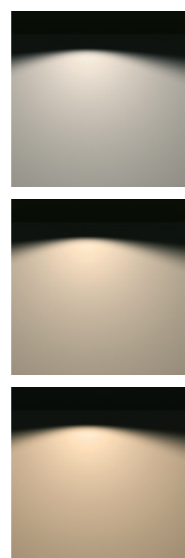


**ATOM SP**

design  
Domus Line

**Surface LED spotlight**

- Materials:**  
thermoplastic polymers, polycarbonate
- Finish:**  
black, chrome plated, aluminium, satin nickel, matt white
- Light source:**  
LGP LED module
- Wiring:**  
2000mm
- Application type:**  
universal
- Installation:**  
surface



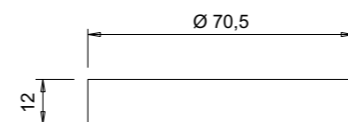
**Colour appearance** natural white  
**Colour temperature** 4000 Kelvin  
**Luminous flux** 195 lm  
**Luminous efficiency** 65 lm/W  
**CRI** Ra ≥ 80

**Colour appearance** warm white  
**Colour temperature** 3000 Kelvin  
**Luminous flux** 180 lm  
**Luminous efficiency** 60 lm/W  
**CRI** Ra ≥ 80

**Colour appearance** super warm white  
**Colour temperature** 2700 Kelvin  
**Luminous flux** 180 lm  
**Luminous efficiency** 60 lm/W  
**CRI** Ra ≥ 80



24Vdc  
Micro 24



**ATOM SP**



Code	Watt & Volt	Light colour
12620_ _N	3W @ 24Vdc	natural white
12620_ _B	3W @ 24Vdc	warm white
12620_ _B1	3W @ 24Vdc	super warm white

Code	Finish
03	black
09	chrome plated
10	aluminium
17	satin nickel
54	matt white

**LED CONVERTER NOT INCLUDED. TO BE ORDERED SEPARATELY.**

SETS OF 2, 3, 4 OR 5 ATOM SP AND LED CONVERTER ARE AVAILABLE ON REQUEST.



FOR LED CONVERTERS AND ACCESSORIES SEE PAGE 70.



FOR TUNABLE WHITE VERSIONS SEE THE DOMUS LINE TW CATALOGUE.



FOR OTHER ACCESSORIES SEE THE DOMUS EXTRA CATALOGUE.

**ATOM SP** was designed for **surface installation** without the need to drill complex holes in the furniture. It is mounted simply by fixing the spacer with the two screws supplied, then applying the spotlight and pressing lightly. **ATOM SP** incorporates a **special LED module with LGP diffuser** ensuring a uniform projection beam without the dot effect.

**FINISHES**



**BLACK** (code 03)



**CHROME PLATED** (code 09)



**ALUMINIUM** (code 10)



**SATIN NICKEL** (code 17)



**MATT WHITE** (code 54)